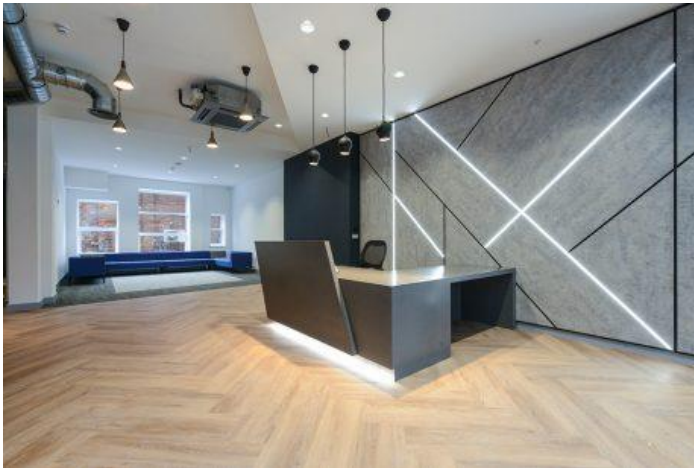




ADC INFRASTRUCTURE EXPAND INTO THE CITY BUILDINGS

ADC Infrastructure, a Nottingham based consultancy service to the property development sector in Transport Planning, Infrastructure Design, and Water Management, have expanded their offices within the city by taking the final floor available within the City Buildings on Carrington Street close to Nottingham Train Station.

The property was substantially refurbished by Shoby Properties following their acquisition of property to provide some of the very best quality offices which Nottingham has to offer retaining many of the property's original features while making the space suitable for the requirements of modern day office occupiers with high quality finishes, full air conditioning as well as on site bicycle storage and repair facilities, showers and changing rooms.



Mark Tomlinson of FHP who acted on behalf of the landlords, Shoby Properties, in securing the deal commented:

"We are seeing a continued trend amongst office occupiers seeking to increase the quality of their working environments and secure premium office spaces within the city and City Buildings delivers just that. We are seeing strong uptake of prime offices across the city and ADC Infrastructure are a fantastic tenant to have secured for the final floor within this building. I'm sure that they will enjoy the quality of the space and the facilities".

Fisher Hargreaves Proctor Limited is the region's leading commercial property consultancy.
Visit our website: www.fhp.co.uk

To find out more please call:

Nottingham 0115 950 7577	Birmingham 0121 752 5500	Derby 01332 343 222
------------------------------------	------------------------------------	-------------------------------

Nottingham Office
10 Oxford Street | Nottingham | NG1 5BG

Birmingham Office
122-124 Colmore Row | Birmingham | B3 3BD

Derby Office
North Point | Cardinal Square |
10 Nottingham Road | Derby | DE1 3QT

David Cummins, Director of ADC Infrastructure commented:

“Our current offices are to be redeveloped, so the opportunity arose to find new offices. We wanted to remain in the city centre, as our staff travel by bike, bus, tram and train. We wanted more space for growth, as we seek to double our numbers to around 60 in the coming years. And importantly, we wanted a quality environment that would encourage everyone to work in the office. The area around Carrington Street is an exciting place to be and the City Buildings felt right from our first visit. This is our fourth move since the company began in 2013, and FHP have again been very helpful at showing us the options. We look forward to working with them for many years to come as they are also the managing agents.”

ENDS

Mark Tomlinson
March 2022

Fisher Hargreaves Proctor Limited is the region's leading commercial property consultancy.
Visit our website: www.fhp.co.uk

To find out more please call:

Nottingham	Birmingham	Derby
0115 950 7577	0121 752 5500	01332 343 222

Nottingham Office
10 Oxford Street | Nottingham | NG1 5BG

Birmingham Office
122-124 Colmore Row | Birmingham | B3 3BD

Derby Office
North Point | Cardinal Square |
10 Nottingham Road | Derby | DE1 3QT
