

Hartley House | Hucknall Road | Nottingham | NG5 1FD

Excellent workshop space available on flexible 2 year licence agreement

80m² to 84m²
(860ft² to 900ft²)

- Loading access
- Communal car parking
- Commercial service elevators x 2
- Full reception/concierge
- Communal WC's
- 24 hour access – 7 days a week
- 1 year licences on flexible terms available
- No deposit needed



TO LET



Location



Gallery



Contact





Location



Gallery



Contact

Location

Hartley House prominently fronts Haydn Road approximately 2 miles north of Nottingham City Centre and less than 1 mile from the A6514 Valley Road Ring Road at the intersection with the A611 Hucknall Road.

The site is located approximately 4 miles from M1 J26 via the A610 Nuthall Road and 9 miles from M1 J25 via the A52 Brian Clough Way.

Description

Hartley House consists of a range of self-contained secure business spaces suited to a variety of uses (subject to use).

The units are available on the basis of a 1 year licence with the following specification:

- Shared reception facilities
- Loading bays
- Double door loading
- Personnel and goods lifts
- Communal area cleaning
- Fluorescent strip lighting
- Concrete flooring
- Kitchenette and WC facilities
- On site parking
- 24 hour loading access
- CCTV and security alarm



Unit 18



Unit 18



Unit 7



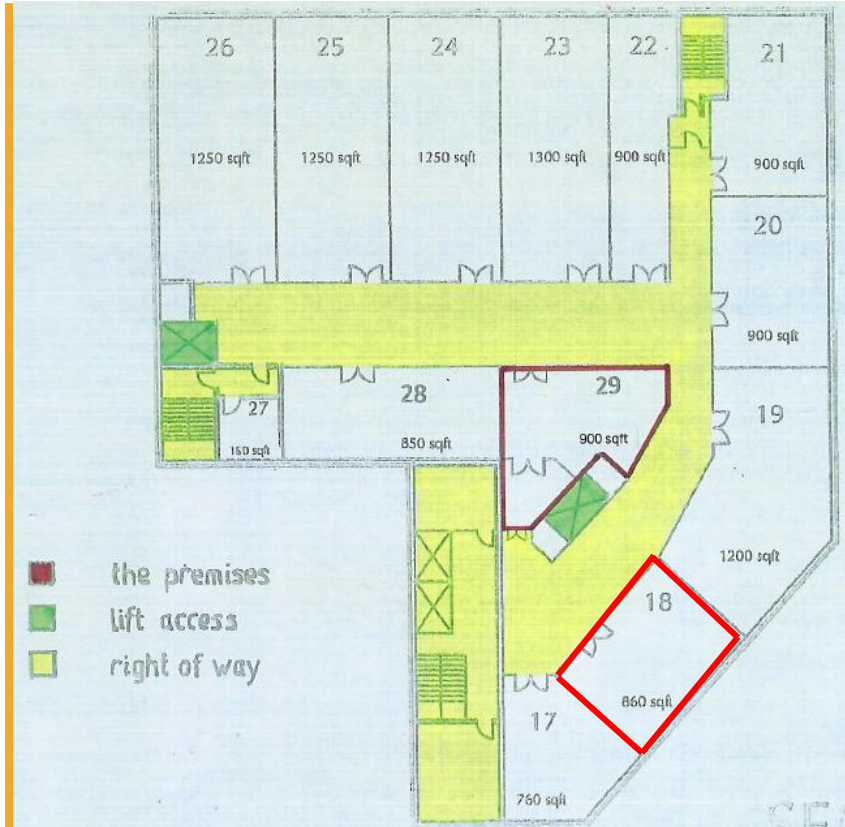
Location



Gallery



Contact



Floor Area

We understand the unit measures:

	FT ²	Service charge	Insurance	Rent
Unit 7	450	£900	£136	£3,600
Unit 18	860	£1,720	£196	£6,450
Unit 29	900	£1,800	£207	£6,300

(This information is given for guidance purposes only)

VAT

VAT applies to rent and other payments due under the lease.



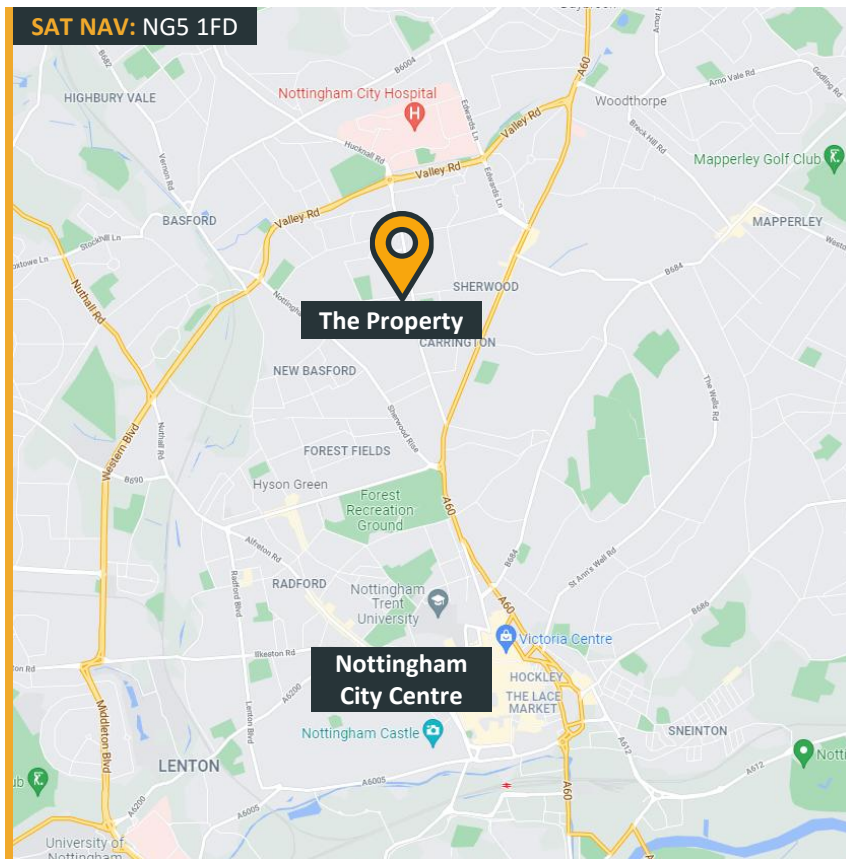
Location



Gallery



Contact



Business Rates

From enquiries of the VOA website we understand the following:

Unit	Rateable Value
Unit 7	To be confirmed
Unit 18	£1,650
Unit 29	To be confirmed

Small business rates relief may be available. Please make your own enquires of Nottingham City Council.

EPC

The EPC rating for building is available from the agent.

Further Information

For further information or to arrange a viewing please call or click on the emails or website below:-

Jamie Gilbertson

07747 665 941

jamie.gilbertson@fhp.co.uk

Amy Howard

07887 787 894

amy.howard@fhp.co.uk



Fisher Hargreaves Proctor Ltd.

10 Oxford Street
Nottingham, NG1 5BG

fhp.co.uk

17/07/2025

Please [click here](#) to read our "Property Misdescriptions Act". E&OE.