

Milnhay Industrial Park | Milnhay Road | Langley Mill | NG16 4AR

Refurbished industrial/warehouse units immediately available and close to Junction 26 of the M1 Motorway

95m² - 246m²
(1,023ft² - 2,653ft²)

- Newly refurbished industrial park
- 22 recently completed light industrial/warehouse units offering units from 1,023ft² to 2,643ft²
- LED lighting, WCs and kitchenette installed
- 3 phase power
- Dedicated forecourts and car parking
- Accessed via A610 leading to Junction 26 of the M1
- Available for immediate occupation



TO LET



Location



Gallery



Contact





Location



Gallery



Contact

The Site

Milnhay Industrial Park offers 32 newly refurbished industrial/warehouse units and hard standing storage land. All 32 units are immediately available for occupation. The development provides:

- **22 units of 1,023ft² to 2,653ft²**
- 4 units of 5,546ft²
- 4 units of 6,992ft² to 7,405ft²
- 1 unit of 12,263ft²
- 1 unit of 29,344ft²
- Up to 3.0 acres hard standing land

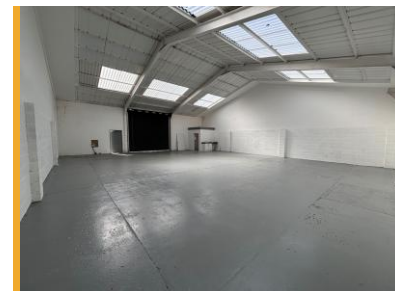
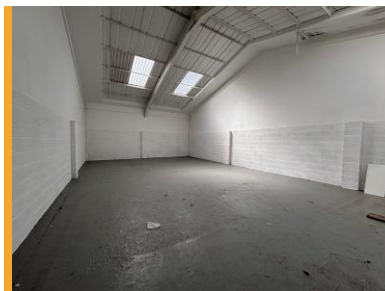
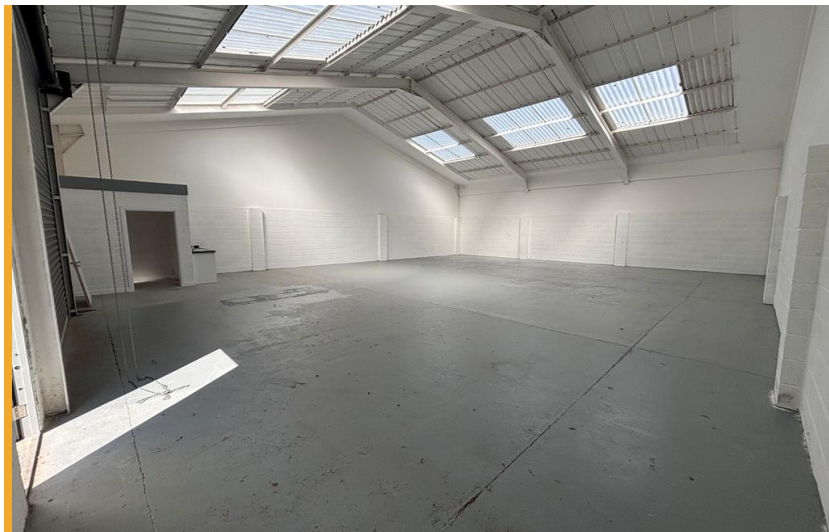
Location

Milnhay Industrial Park is situated on Milnhay Road which leads to the A608 and the A610, which in turn provides fast and convenient access to Junction 26 of the M1 motorway which is 4.9 miles southeast and the A38 which is 5.6 miles northwest.

Langley Mill is located equidistant to Nottingham and Derby being 9.6 miles east and 10.3 miles west respectively. Nearby amenities include Asda Superstore, Tesco Superstore, Lidl and Aldi.

EPC

The units will be assessed upon completion.





Availability and Rent

Unit	Ft ²	Rent per Annum
5	2,653	£24,000
12	1,989	£18,000
13	LET	
14	1,598	£16,000
15	2,445	£22,000
16	2,463	£23,000
17	1,690	£17,000
18	2,530	£23,000
19	2,383	£22,000
20	2,412	£22,000
21	1,599	£16,000
23	1,617	£17,000
24	2,247	£22,000
25	2,426	£22,000
26	2,553	£24,000
27	UNDER OFFER	£17,000
28	2,481	£23,000
29	1,023	£17,000
30	2,427	£22,000
31	1,618	£17,000
32	1,474	£15,000
33	2,025	£19,000



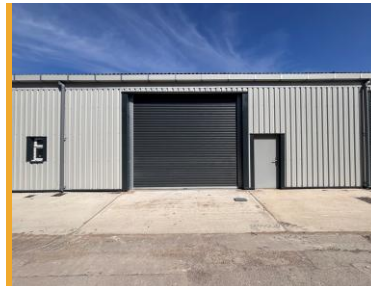
Location



Gallery



Contact



The Units

The entire estate has undergone a comprehensive refurbishment, the units being of steel portal framed construction with newly clad elevations. Each unit benefits from personnel access and level access service doors accessing the external loading and car parking area.

These units' specification include:

- Concrete slab floors
- 3.9 metres minimum internal clearance to eaves
- LED lighting within the production/warehouse space
- Installed WC and kitchenette
- Level access electric roller shutter loading door
- Translucent roof lights
- Telecoms/data – an incoming BT duct is provided to each unit
- Car parking and designated delivery access

Service Charge

A service charge will be payable. The service charge budget is currently being evolved and cost and services provided will be available shortly.

Business Rates

The premises are yet to be assessed for rates – guide figures of the estimated Rateable Values can be provided – these are for guidance purposes only and will be subject to formal verification once the VOA have assessed the properties for rates.



Location



Gallery



Contact





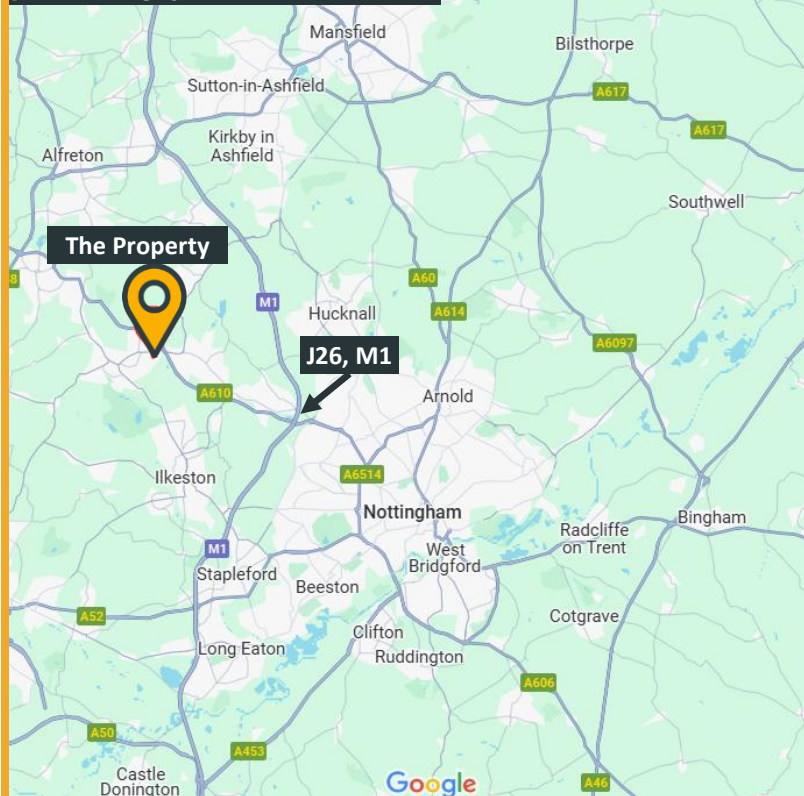
Location



Gallery



Contact

WHAT3WORDS: robes.brave.wipe**SAT NAV:** NG16 4AR

Legal Costs

Each potential occupier is to make a contribution of £500 towards landlord's legal costs.

VAT

VAT will be payable in addition to rent and all payments due to the landlord.

Further Information

For further information or to arrange a viewing please call or click on the emails or website below:-

Harry Gamble

07398 443 828

harry.gamble@fhp.co.uk**Corbin Archer**

07929 716330

corbin.archer@fhp.co.uk**Darran Severn**

07917 460 031

darran@fhp.co.uk**Tim Gilbertson**

07887 787 893

tim@fhp.co.uk**0115 950 7577****01332 343 222****Fisher Hargreaves Proctor Ltd.**Cardinal Square
Nottingham Road
Derby DE1 3QT**fhp.co.uk**

04/07/2025

Please [click here](#) to read our "Property Misdescriptions Act". E&OE.