

Viking Business Centre

High Street Swadlincote DE11 7EH

Warehouse | 1,330 - 1,735 ft²



CCTV



On site parking



Three-phase electricity

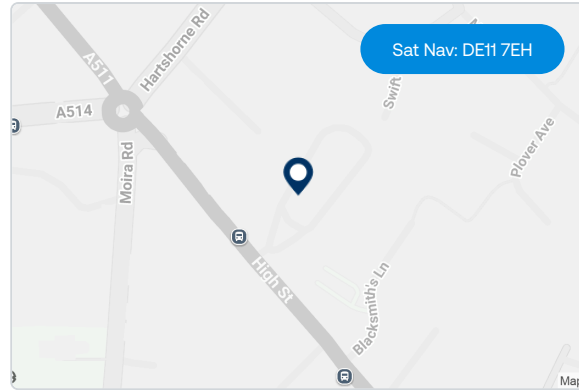
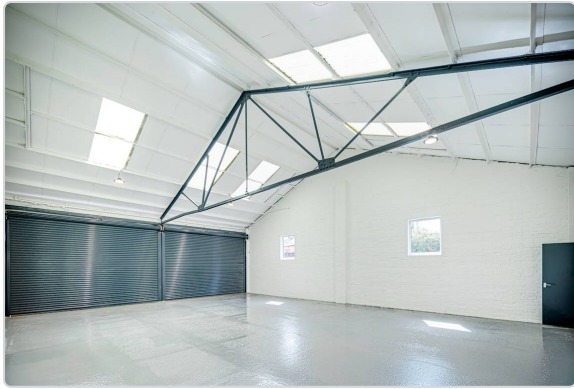


Established business area

Available to Let

LastMileFirst | mileway.com





Description

The premises comprise a mid terraced industrial/warehouse unit of steel portal frame construction and provides clear span warehouse accommodation.

Location

Viking Business Centre is situated off the A511 High Street, Woodville, close to its junction with the A514. Woodville is well located approximately 6 miles south east of Burton on Trent and 4 miles west of Ashby and J13 of the A42.

Further information

EPC

Unit 1: B, Unit 6: C,
Unit 11: E, Unit 12: E

Rent

Monthly rent is an estimate based on a three-year term, excluding VAT, insurance, service charge. Payment terms vary.

Terms

Available on new full repairing and insuring leases.

Legal costs

All parties will be responsible for their own legal costs incurred in the transaction.

[Book a viewing](#)

Frankie Hudson
Mileway
midlands@mileway.com
0121 368 1760

Harry Gamble
FHP
Harry.Gamble@fhp.co.uk
07398 443 828

Corbin Archer
FHP
corbin.archer@fhp.co.uk
01332343222



Accommodation:

Unit	Property Type	Size (sq ft)	Availability	PCM Rent (£)
Unit 1	Warehouse	1,735	Immediately	1,520
Unit 11	Warehouse	1,330	Immediately	1,220
Unit 12	Warehouse	1,330	Immediately	1,220
Total		4,395		

Rent is quoted on a per calendar month basis and is provided as a market estimate, subject to change on an assumed three year term. Rent is exclusive of rates, VAT, insurance, and service charge. Please note that rent payment may not be due monthly.

This document (together with any attachments, appendices, and related materials, the "Materials") is provided on a confidential basis for informational due diligence purposes only and is not, and may not be relied on in any manner as legal, tax, investment, accounting or other advice or as an offer or invitation to lease the property referred to herein or otherwise enter into any other transaction, agreement or arrangement, nor shall it or the fact of its distribution form the basis of, or be relied on in connection with, any lease or other contract or any commercial or investment decision. If such offer is made, it will only be made by means of heads of terms (collectively with any additional documents, the "Heads of Terms"), which would contain material information not contained in the Materials and which would supersede and qualify in its entirety the information set forth in the Materials. In the event that the descriptions or terms described herein are inconsistent with or contrary to the descriptions in or terms of the Heads of Terms, the Heads of Terms shall control. None of Mileway nor any of its respective affiliates makes any representation or warranty, express or implied, as to the accuracy or completeness of the information contained herein and nothing contained herein should be relied upon as a promise or representation of any kind.

Mileway